



IPC

BY TENNANT COMPANY

VACUUM CLEANERS - WET & DRY - LIGHT INDUSTRIAL

GC 3/107 W&D



POWER MAX

3300
W

WATER LIFT

2470
mmH₂O

AIRFLOW

630
m³/h

TANK CAPACITY

107
l

EXCLUSIVE FEATURES

- ▶ SANIFILTER
- ▶ INNOVATIVE GASKET
- ▶ STRONG HOOKS
- ▶ INDEPENDENT MOTORS WITH LIGHT SWITCHES
- ▶ SEALANT FLOATER & INTEGRATED ANTIFOAM SYSTEM
- ▶ TIPPING TROLLEY
- ▶ RELIABLE CONSTRUCTION FOR INTENSIVE USE
- ▶ DOUBLE STAGE MOTORS
- ▶ MICROFIBER BAG



MOST FREQUENTLY USE

HEALTHCARE



PHARMA INDUSTRY



AGRICULTURE



CONSTRUCTION



HEAVY INDUSTRY



INNOVATIONS



BLACK IS GREEN™



NEW BLEND FLEXIBLE HOSE

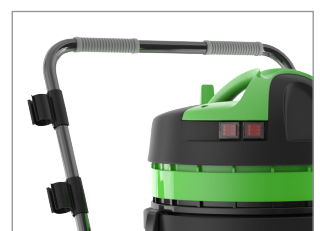
SPECS



DRAIN VALVE FOR EASY EMPTYING



TIPPING TANK



TROLLEY WITH HANDLE AND PARKING POSITION

TECHNICAL DATA

		GC 3/107 W&D
Code		ASD015056
PERFORMANCE		
Usage		WET&DRY
Motor		3x 2-stage
Power	W	2900-3300 max
Voltage	V	220 - 240
Water lift	mmH ₂ O	2470
Airflow	m ³ /h	630
Tank Capacity/Material	l	107/plastic (polyethylene)
Cable length	m	8,5
Sound Pressure Level (EN 60704-1; EN 60704-2-1; IEC 60335-2-69)	dB(A)	76
Diameter of inlet	mm	60
Diameter of accessories	mm	38
Dimensions (LxWxH)	mm	500x620x1110
Weight	Kg	32,0

STANDARD EQUIPMENT

CODE: FTDP28733
DRY FILTERING KIT



CODE: FTDP41886
NYLON FILTER



CODE: TBFX01360
EXTRA STRONG FLEXIBLE
HOSE 5 m Ø38 mm



CODE: MPVR00152
PLASTIC TUBE 50 cm
Ø38 mm (FOR 1 PIECE)



CODE: LAFN28240
DOUBLE STEEL WAND
Ø38 mm



CODE: SPPV37133
BRISTLE BRUSH Ø38 mm



CODE: SPPV00103
WET BRUSH Ø 38 mm



CODE: SPPV00156
FLAT LANCE Ø 38 mm



CODE: SPPV43052
ROUND BRUSH Ø 38 mm



CODE: MPVR43049
ADAPTER



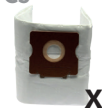
OPTIONAL ACCESSORIES

CODE: KTRI02912
PAPER BAG SET OF 10 PCS



X10

CODE: KTRI04796
MICROFIBER BAG SET
OF 10 PCS



X10

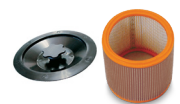
CODE: FTDP00223
PREFILTER PCB



CODE: FTDP00654
WASHABLE CARTRIDGE
KIT W/RING AND GASKET



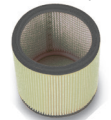
CODE: FTDP00657
HEPA CARTRIDGE KIT W/
RING AND GASKET



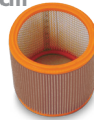
CODE: MPVR28723
FASTENING PLASTIC RING



CODE: FTDP44260
WASHABLE POLYESTER
CARTRIDGE (AVAILABLE
AS SPARE PART) 3.000 cm²



CODE: FTDP28844
HEPA H13 CARTRIDGE
(AVAILABLE AS SPARE PART)
3.000 cm²



CODE: FTDP28755
MESH FILTER



CODE: SPPV01336
CARPET BRUSH Ø38 mm



CODE: SPPV28248
FIXED ACCESSORY FOR
LIQUID



CODE: SPPV28247
FIXED ACCESSORY FOR
DUST



CODE: SPPV30894
FIXED ACCESSORY FOR
DUST AND LIQUIDS



CODE: KTRI06274
3D WET FILTERING KIT FOR
MIXTURES



CODE: KTRI06214
DFS HEPA H14 KIT



CODE: LAFN11826
TELESCOPIC CHROMED
DOUBLE WAND Ø38 mm

